

Community Newsletter

15th March 2024

If you have any community information that may be suitable for this newsletter, please send it in to the school office: FAO Mrs Taylor – Community Newsletter.



Our Canter for Cure Challenge

We have been asked to share this challenge with you. Lily in 6 Acacia along with some of her horse riding friends are taking part in a 'Canter for a Cure' to raise money for bone cancer research trust.

Every 10 minutes another child, teenager or adult is diagnosed with this brutal disease. All funds raised by the charity's supporters will be put to use in all four areas of their work, not least to help to fund pioneering research to find a cure for this rare disease. They are investigating new treatments and 100% of their research is dedicated to primary bone cancer.

Please follow the link for the JustGiving page if you are able to help with this fundraising.

https://www.justgiving.com/page/eastminstergirls3?utm_medium=fundraising&utm_content=page%2Festminstergirls3&utm_source=copyLink&utm_campaign=pfp-share



Forest School volunteers

We are looking for volunteers to help support us during our Forest School sessions. The support of volunteers from our school community is vital in helping us to provide this great experience for the children at Branfil. Volunteers can include parents, carers and extended family members. Please note that all volunteers will be required to have an up to date DBS check, which can be arranged via the school office if needed.



Responsibilities for volunteers at Forest School include helping to get resources ready for the session, supporting children with activities and helping to pack away at the end. The sessions are lots of fun and it is a great opportunity to spend some time in the great outdoors, it is worth noting that Forest School goes ahead whatever the weather!



We are looking for volunteers to support us with the following sessions:

- Tuesday afternoons from 1pm-3pm
- Wednesday mornings from 9:30am-11:30am
- Wednesday afternoons from 1pm-3pm

If you or a family member would like to volunteer please email Mrs Ferguson at forestscool@branfil.havering.sch.uk and let us know if you have a current DBS check or if you would like details about how to obtain one.

Raring2go!

Please follow the link to find out what is available for you and your child in Havering this spring:
<https://raring2go.co.uk/>

A letter from Havering Council regarding Measles



March 2024

Measles can be a really serious illness: for every five children who get measles, one will require a hospital visit; for every 15 children who get measles, one will be affected by serious conditions, such as blindness, meningitis and sepsis. It's also highly infectious – one case of measles can infect 90% of unvaccinated close contacts (this includes those children share a classroom with).

Measles cases are rising in the UK, and it is likely that there will be outbreaks across London.

The safest and most effective way to protect yourself, the children you care for and your community against measles is to make sure that you and your children are up to date with MMR vaccinations.

Two doses of the MMR vaccine provide 99% protection against measles. It is never too late to get your MMR vaccination and you can check whether you or your child's vaccinations are up to date by contacting your GP or by looking in your child's red book.

For more information about measles and the MMR vaccine, please visit the following webpages:

- www.nhs.uk/conditions/measles/
- www.nhs.uk/conditions/vaccinations/mmr-vaccine/



Information in other languages:

An information leaflet about measles, mumps and rubella and the MMR vaccine is available here: [MMR for all: general leaflet - GOV.UK \(www.gov.uk\)](http://www.gov.uk). Translated versions are also available in the following languages; Bengali; Polish; Romanian; Somali; Ukrainian; and Yoruba.



Friends of Branfil news: March 2024

Your newsletter about our PTA!

Website: <http://friends.branfil.com>

Facebook: <https://www.facebook.com/BranfilPrimarySchoolPTA/>

Highlights:

We have the Mothers day sale coming up on Friday 8th March and we need your help to run the sale throughout the school day.

Please buy your gift tickets on the website and if possible volunteer by going to the 'Can You help?' section on the home page:

<http://friends.branfil.com>

In other news, the Year 6 Leaver hoodies have been ORDERED.

Thank you to all year 6 parents who got in their requests in a timely manner!

ANYONE WHO HASN'T FILLED IN A REQUEST TO ORDER A HOODIE, PLEASE CONTACT US VIA EMAIL AT FRIENDS@BRANFIL.COM

Upcoming Events

Mothers Day Sale -
Friday 8th March

Easter Egg Roll Games
- Monday 25th March

Year 6 leavers Disco -
Tuesday 23rd July

Summer Fair - TBC

Products available:

Available to buy on our website now:

- Pre-Loved Uniform
- Adventure Island wristbands continue to be available online for collection from Pin Ups Salon, Gidea Park or school office on request.



WANTED

If you have any of the items listed below now or in the future, please bring them into school FAO Mrs Mead (Tue-Fri) or Mrs Guttridge (Mon). Mrs Mead and Mrs Guttridge are usually on the playground in the mornings. Alternatively, donations can be given to the school office. Our resources always need replenishing!

Thank you to everyone in school community who was able to donate items over the past so far for our OPAL (Outdoor Play and Learning) Project. Your donations help to provide the children at Branfil with a broad range of play opportunities at lunchtime.

 strollers	 scooters	 Dressing up costumes or accessories	 Instruments
 Cookware (for the mud kitchen)	 Sand play toys	 Water tables and water play accessories (e.g. buckets, watering cans)	 Role play accessories including tills (bigger the better)
 Fabric for den making (e.g. duvet covers, curtains)	 Small outdoor slides/rocking horses	 Plastic/ lightweight garden chairs	 Wendy house (please speak to us beforehand)
 Lengths of guttering/ pipes for water play and dens	 ropes	 tarpaulin	 If you have something else that you would like to donate, please speak to us!





What are **LOOSE PARTS?**

Loose parts are items that can be used to facilitate different kinds of play, or any material that a child can manipulate for playful purposes.

Natural Loose Parts



Acorns



Grass



Leaves



Logs



Pine Cones



Rain & Water



Sand



Snow



Soil



Sticks



Stones



Wild Flowers



Wood Cookies

Upcycled Loose Parts



Baking Pans



Cake Moulds



Ice Cube Trays



Kitchen Tools



Measuring Spoons



Pots & Pans



Strainers



Baskets



Cable Spools



Cardboard Items



Cones



Containers



Corrugated Pipes



Dress-Up Items



Fabric



Funnels



Milk Crates



Nets



Old Electronics



Pool Noodles



PVC Pipes



Rolling Carriers



Ropes



Shovels & Spades



Sinks & Tubs



Tarps



Tires & Wheels



Wooden Planks





Thank you to all those parents, carers or grandparents who volunteered last year. Your support was really appreciated by our children and our staff.

We would love to welcome back our previous volunteers and welcome some new ones to our school community. If you are able to volunteer at Branfil, please e-mail the office (office@branfil.havering.sch.uk) with the following details:

- Your full name
- Your children's/ grandchildren's names (this helps us not to place you in the year group your children are in)
- Your availability and ideal days and times you would be willing to volunteer
- Any preference on what you would like to volunteer your time to do (e.g. hearing readers, supporting in the library)

I will then be in touch to complete your volunteer induction and finalise arrangements.

Mrs Metcalfe

SENCo and Assistant Headteacher

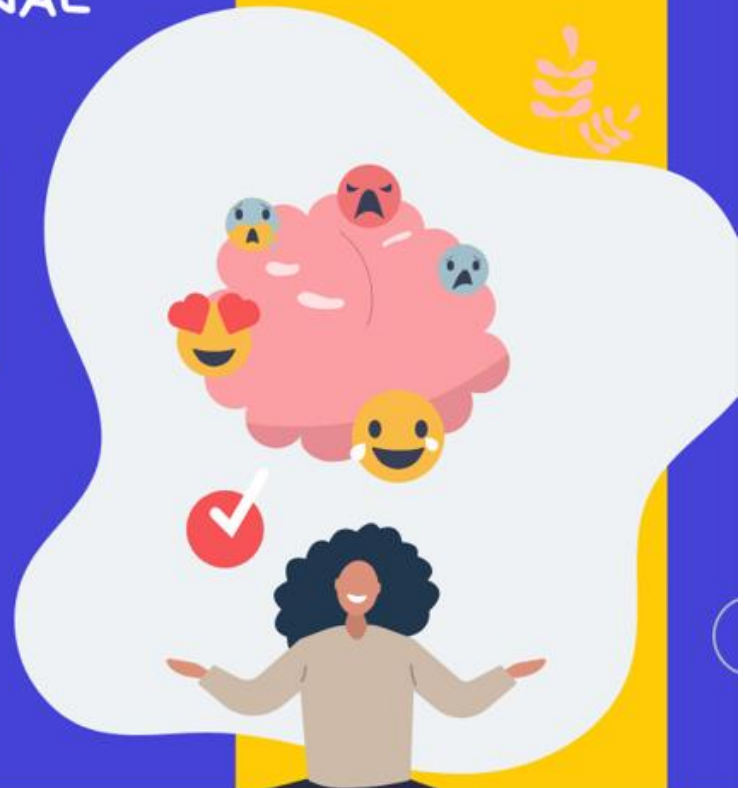
ONLINE WORKSHOPS

WE ARE OFFERING A SERIES OF
ONLINE WORKSHOPS TO SUPPORT
YOU WITH UNDERSTANDING AND
MANAGING YOUR EMOTIONAL
WELLBEING

SCAN THE QR CODE
BELOW TO VIEW OUR
UPCOMING WORKSHOPS



HEST
Havering Emotional Support Team



ONLINE WORKSHOPS

**WE ARE OFFERING A SERIES OF
ONLINE WORKSHOPS FOR PARENTS
TO SUPPORT WITH
UNDERSTANDING AND MANAGING
CHILD'S EMOTIONAL WELLBEING**

**SCAN THE QR CODE
BELOW TO VIEW OUR
UPCOMING
WORKSHOPS**



HEST

Havering Emotional Support Team





Dear Parents,

Kids With Bricks After School Club at Branfil Primary School

We are pleased to be able to offer our Kids With Bricks after school club running from **3.15-4.15** every **Wednesday** for **5 weeks from 28th February 2024**. This club is open for **Years 1-6** and there are a maximum of 30 places available. The club is organised, administered and supported by Kids With Bricks Ltd, an external provider who deliver after school clubs across the whole of the UK.

As well as completing a range of exciting educational challenges, students will have the chance to work both individually and to work in teams.

As an added bit of fun, students from the club will also take part in a weekly inter-school competition where parents can vote for their favourites and points are won for the national leader board.

BOOK ONLINE!

The club costs £3.99 +VAT per child per session and is paid for termly in advance. All club places are reserved and paid for online. Just go to www.kidswithbricks.com to book your child's place.

***Ticket sales go live Wed 7th Feb at midday!**

Any problems please contact us on 01633 383211 or bookings@kidswithbricks.com

Kind regards,

John Gallacher



SING Show ACT
STARS
Theatre Company Ltd.
DANCE

Come SING, ACT & DANCE with us!

BOOK YOUR SPACE TODAY

 Call or WhatsApp - 07474001107

 @showstarstheatre

 @showstarstheatre

www.showstarstheatrecompany.co.uk

Tuesday Classes
3.15 - 4.15

**"Building confidence simply
by having FUN!"**





Urgent help needed for Girlguiding

Have you got an hour or two a week to spare in an evening?

Would you like to help build girls' social skills, self-confidence and knowledge and understanding of the world?

Do you enjoy craft activities and can you plan interesting games and experiences for young people? Do you have lots of ideas and energy to share with young girls?

If this appeals to you, - Your local Guiding units need you!

Our groups accommodate girls from 5-7yrs, 7- 10 yrs, 10- 18yrs. We desperately need extra helpers and leaders to keep all our current units open, as so many units have already closed and we have lots of girls waiting to join.

Please get in touch with Josie on 07835418914 or email josieandsharon6thub@gmail.com to find out more.

HMS Havering Music School

- Learn with Havering Music School's dedicated team of specialist teachers
- From primary school age onwards
- Personalised tuition tailored to individual needs and aspirations

MUSIC TUITION

musicschool@havering.gov.uk

<p>BRONZE £33.67 per month 20 minute lesson for group of two</p>	<p>SILVER £56 per month 15 minute individual lesson</p>	<p>GOLD £89.50 per month 30 minute individual lesson</p>
<p>ALL LESSONS INCLUDE ADDITIONAL SUPPORT AND RESOURCES</p>		

www.haveringmusicschool.org.uk



How to apply...

Havering Music School – Instrumental tuition request
Please complete one form per child, USING BLACK INK AND BLOCK CAPITALS.

Your child's details:

Name: Date of Birth:/...../.....M/F

I wish to apply for a place at my child's school: (name of school)

I wish to apply for a place at the Weekday or Saturday Music Centre (tick box here)

School Year:

Please decide which instrument(s) your child would like to learn, then enter the name(s) of the instrument(s) below

1st choice instrument

2nd choice instrument (optional)

3rd choice instrument (optional)

Current Level: BEGINNER GRADE

Now please decide which package you would like for your child -

BRONZE £33.67 per month <input type="checkbox"/>	SILVER £56 per month <input type="checkbox"/>	GOLD £89.50 per month <input type="checkbox"/>	<input type="checkbox"/> Single ensemble £16.50 per month
			<input type="checkbox"/> Unlimited ensemble £30.40 per month

Not available at Centre

Your contact details:

Mr/Mrs/Ms/Dr:

Name:

Telephone:

Email:

Address:

Postcode:

Please send the completed form to: Havering Music School, The Walk, Hornchurch, RM11 3TL

The Council holds personal information about its customers and clients and Havering's residents. All the information about you that we hold is protected under the Data Protection Act 1998. The Act refers to users of personal information as 'Data Controllers' (such as the Council) who must work within the requirements of the Act when receiving and using information about you.

Direct Debit Instruction

Please find below an instruction to request payment by Direct Debits.

The total amount of your instrumental lessons will be collected monthly. Please complete the form fully and return it to us by detaching this form, folding and sealing it, and posting back to us.

The Direct Debit Guarantee

- This Guarantee is offered by all Banks and Building Societies that accept instructions to pay Direct Debits.
- If there are any changes to the amount, date or frequency of your Direct Debit the London Borough of Havering will notify you 10 working days in advance of your account being debited or as otherwise agreed.
- If you request the London Borough of Havering to collect a payment, confirmation of the amount and date will be given to you at the time of the request.
- If an error is made in the payment of your Direct Debit by the London Borough of Havering or your Bank or Building Society, you are entitled to a full and immediate refund of the amount paid from your Bank or Bank Society.
- If you receive a refund you are not entitled to, you must pay it back when The London Borough of Havering asks you to.
- You can cancel your Direct Debit at any time by simply contacting your Bank or Building Society. Written confirmation may be requested. Please also notify us.

Instruction to your Bank or Building Society to pay direct debits

Please pay the London Borough of Havering Direct Debits from the account detailed in this instruction subject to the safeguards assured by the Direct Debit Guarantee. I understand that the instruction may remain with the London Borough of Havering and, if so, details will be passed electronically to my Bank/Building Society.



Full postal address of your Bank/Building Society

To: The Manager.....

Address.....

Postcode.....

Name(s) of the Account Holder(s)
.....

Account Number
.....

Branch Sort Code
.....

Originator's Identification Number

9 5 4 2 7 8

Originator's Account Number

.....

Signature(s)

.....

This section is not part of the instruction to your Bank/Building Society. **LBH use only**

Customer name
Address

Date
Actioned by
FWD to Bank



HCL

FEBRUARY ACTIVITY CAMPS

BRADY PRIMARY SCHOOL • ST PATRICK'S CATHOLIC PRIMARY SCHOOL
★ TUDOR COURT PRIMARY SCHOOL • KNIGHTS WAY CENTRE

Find a HCL Activity Camp that suits you this February Half Term 2024. HCL will be providing their usual huge range of sports and activities including Football World Cup, Lego Builders, Gymnastics, Themed Arts & Crafts, Talent Show, Mini Olympics, Traditional Games, Soft Archery, Team Building, Tri-Golf, Orienteering/Bush Craft, Movie Afternoons and much more! in venues across Havering, Thurrock and Essex.....**BE QUICK AS SPACES FILL UP FAST!!**

19th to 23rd February 2024

HAVERING

Brady Primary School
St Patrick's Catholic Primary School

THURROCK

Tudor Court Primary School

ESSEX

Knights Way Centre



BOOK NOW - <https://hcl-activity-camps-limited.classforkids.io/camps>

HCL Activity Camps Ltd | 07778 874 029 | info@hclactivitycamps.co.uk | www.hollowaycoaching.co.uk

LIONETTES

FOOTBALL ACADEMY

LAUNCH DATE 09.03.24

New City College - Havering Sixth Form,
Wingletye Lane, Hornchurch RM11 3TB

Younger (5 to 11 years) 10am-11am

Older (11 to 16 years) 11am-12pm

FREE
TASTER SESSION
AVAILABLE
BOOK TODAY



EXPERIENCED FEMALE COACHES

About Us

The Lionettes Football Academy will run every Saturday at New City College - Havering Sixth Form, Wingletye Lane, Hornchurch RM11 3TB. We work with girls of all abilities from ages 4 to 16 with our focus for the sessions on ball mastery and development of technique, as being able to manipulate the ball is essential in the modern game. No session is the same with a strong emphasis on the players having fun!

TRY THE LIONETTES FOR FREE - BOOK HERE

<https://holloway-coaching-ltd.classforkids.io/>

Our Coaches

The girls will be coached by two female ex professionals players Emma Sherwood and Kim Bignall.



Emma Sherwood

Emma is an experienced UEFA qualified coach with over 14 years experience and an ex professional football player for Chelsea, West Ham and Charlton ladies. Emma has also represented England's college team for over 2 years becoming top goal scorer in her time.

Coach quote: *I have a passion to help the next generation of footballers, deliver high quality sessions to maximise technical and tactical demands of players and help unlock the full potential in players.*

Kim Bignall

Kim is an experienced UEFA qualified coach who is passionate about developing individuals, opportunities for girls, creating a fun & enjoyable environment and supporting girls reach their potential. Having played football since a young age, including a spell at Wycombe Wanderers ladies and having coached a range of ages and abilities, including coaching girls' community and academy sessions at Charlton Athletic Kim brings a wealth of knowledge and experience.

Coach quote: *Hard work beats talent, when talent doesn't work hard*